

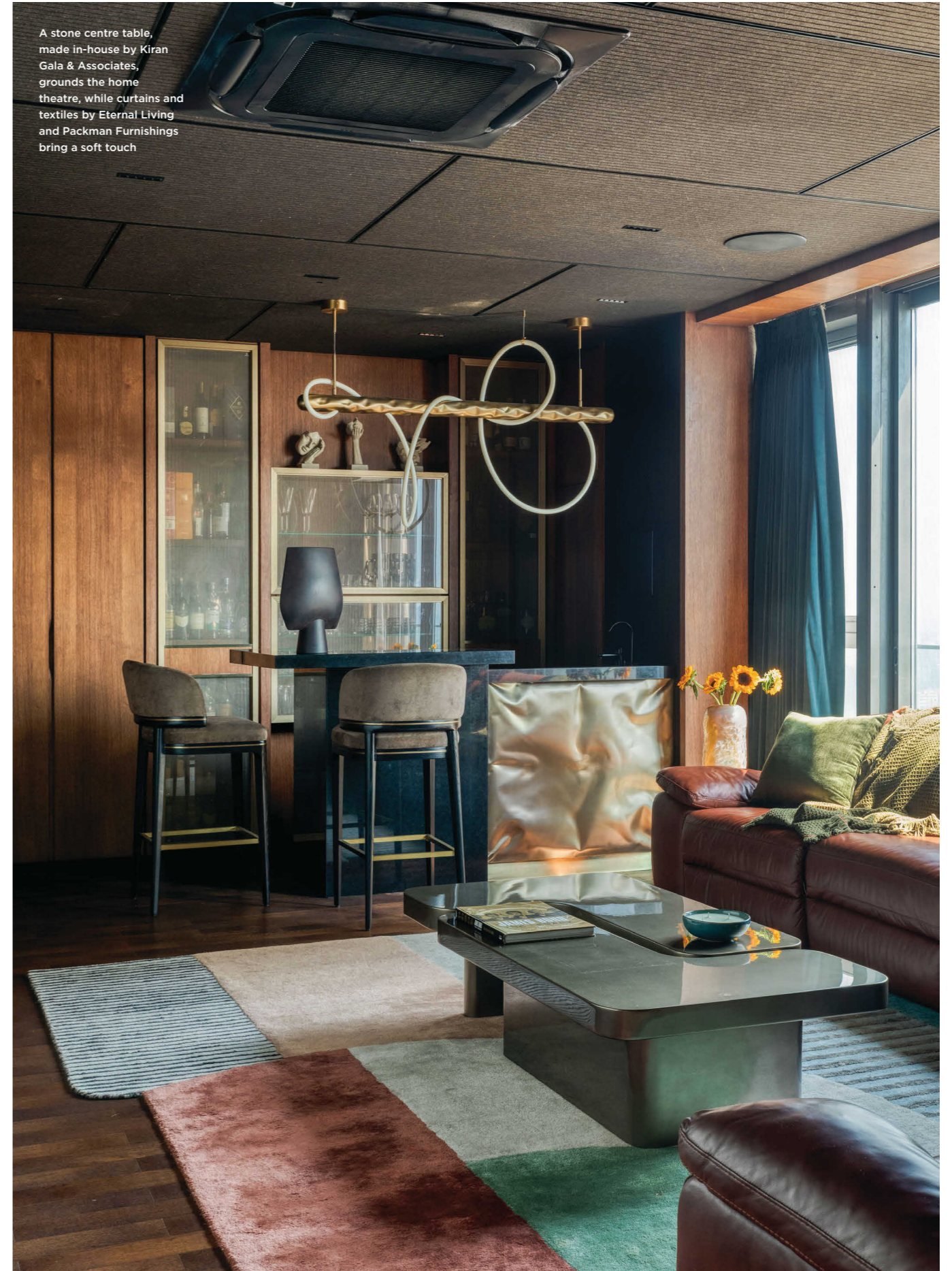
In the informal living room, a custom-made Jaipur Rugs carpet and furniture from WITHIN capture warmth from the flood of natural light

SCALED FOR STYLE

In Kolkata, Kiran Gala and Sonam Gala Gosalia merge two sky-high flats into a duplex where grandeur meets warmth

WORDS SHARVARI JOSHI PHOTOS PULKIT SEHGAL

The double-height living room is anchored by a sculptural staircase, crafted with interlocking metal rings under a custom-built chandelier



A stone centre table, made in-house by Kiran Gala & Associates, grounds the home theatre, while curtains and textiles by Eternal Living and Packman Furnishings bring a soft touch



Kashvi Agarwal's 7,500 sq ft duplex in Kolkata started as two separate apartments on the 27th and 28th floors. The six-bedroom space came with enviable views and abundant natural light – elements that Kashvi was keen to capitalise on. “We imagined a home that was open and clear, that transcended trends but was full of personality,” she says. In the hands of Kiran Gala and Sonam Gala Gosalia of Kiran Gala & Associates, that vision took shape – a sweeping duplex, anchored by a grand double-height living room and enriched with thoughtful, handcrafted details.

To bring Kashvi's vision of openness to life, the two flats had to be merged into one. The slab between the two floors was removed with the help of a structural engineer, creating a soaring double-height ceiling for the living area. A sculptural staircase crafted in rings of metal was introduced to join the two levels. Ascending like a ribbon beneath a glowing chandelier, it ties the duplex together visually and spatially. “The staircase was the very first element we designed,” Kiran says, “It is the anchor around which the home's experience unfolds.”

From there, the story is told in layers of marble and wood. Because the apartment was already flooded with light, the designers could experiment with moodier materials like black marble and deep-toned veneer without it feeling too heavy. In the shared spaces, rich Sucupira veneer grounds the cabinetry and walls, while warm maroon accents soften the brightness of the home's abundant natural light. The personal areas – two bedrooms on the lower floor and four above, are furnished with custom furniture, plush fabrics, and splashes of colour that add warmth and intimacy. Connecting it all is black-and-white checkered inlay flooring that runs like a thread through the interiors. “Each piece of the inlay was hand-cut and laid on site,” explains Sonam, “That level of handcrafted detail allowed us to heighten the home's architectural drama, while keeping it refined.”

Within this home, shaped by striking architectural details, the addition of art brings in layers of memory and cultural context. Many of the paintings were acquired at a one-day art auction in Kolkata, hand-picked by Sonam and then styled with locally-sourced decor finds. Among them were two paintings of the city of Varanasi, chosen as a tribute to Kashvi's mother's hometown. Behind the staircase, a ceramic installation of 30 hand-moulded white artworks creates a sculptural counterpoint to the marble flooring. For all its drama and scale, the duplex ultimately finds its essence in balance. “What I love is how the grandeur never overshadows the warmth. It adds to the vision we had – a home that feels open, inviting, and timeless,” Kashvi shares. ♦ kgadesign.in

A whimsical motif armchair by WITHIN echoes the eclectic wall art by Jayasri Burman and Jogen Chowdhury (OPPOSITE PAGE) A dining set by WITHIN sits on a custom carpet by Hands, softly lit by a sculptural pendant light





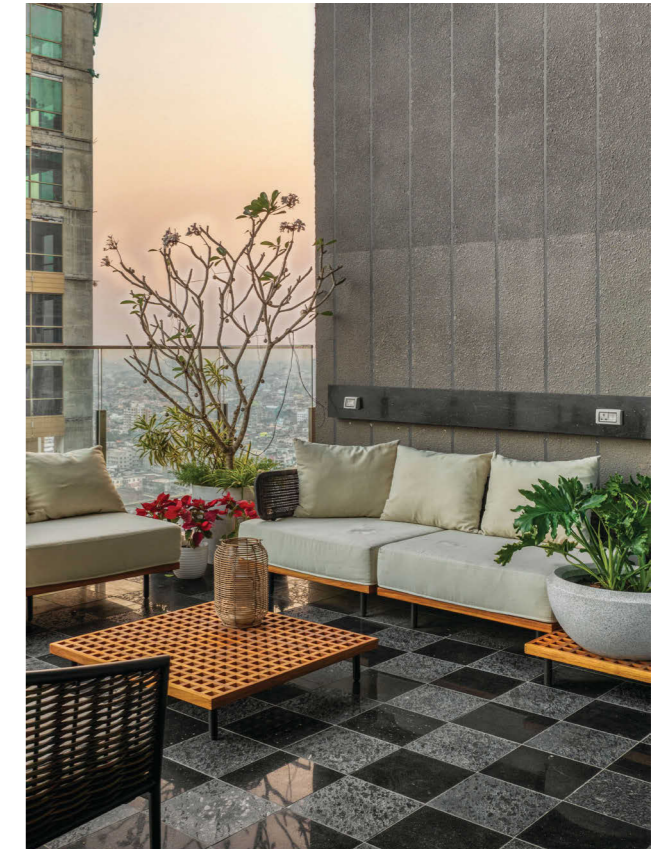
The focal point of the master bedroom is the headboard wall, finished in a marbled texture that mirrors the marble flooring. An ottoman and chair from WITHIN create a cosy reading nook



Seating in neutral shades from WITHIN and a striped rug from Hands ground the den, with cobalt blue accents adding a pop of vibrancy



The bar unit is crafted from Brazilian green onyx, paired with plush pink seating



FOUNDED IN 1986, Kiran Gala & Associates is known for innovation, precision, and a client-centric approach. Helmed by Kiran Gala and Sonam Gala Gosalia, the firm has worked extensively in India and internationally – from luxury residences and villas to commercial and corporate projects. Their collaborative, detail-driven process is their hallmark, creating personalized spaces that are a true reflection of their clients’ unique lifestyles.

IF THIS HOME HAD A SPIRIT ANIMAL, WHAT WOULD IT BE?
Definitely an elephant – grand and strong, yet grounded.

THE MOST CHALLENGING SPACE TO DESIGN?
The staircase. It had to feel just right – not too big or too small. It’s the first thing you see so it needed to make a statement.

ONE MATERIAL YOU COULDN’T LIVE WITHOUT?
Veneer. It adds warmth and sets the tone for the maroon accents throughout.

BIGGEST INDULGENCE IN THE PROJECT?
The hand-laid checkered marble inlay. It started out as a small detail but grew to become a major feature that tied the home together. Costly and time-consuming – but totally worth it!

From left: Sonam Gala Gosalia and Kiran Gala of Kiran Gala & Associates; Checkered flooring of rough and polished granite creates a canvas for a cosy seating arrangement on the terrace